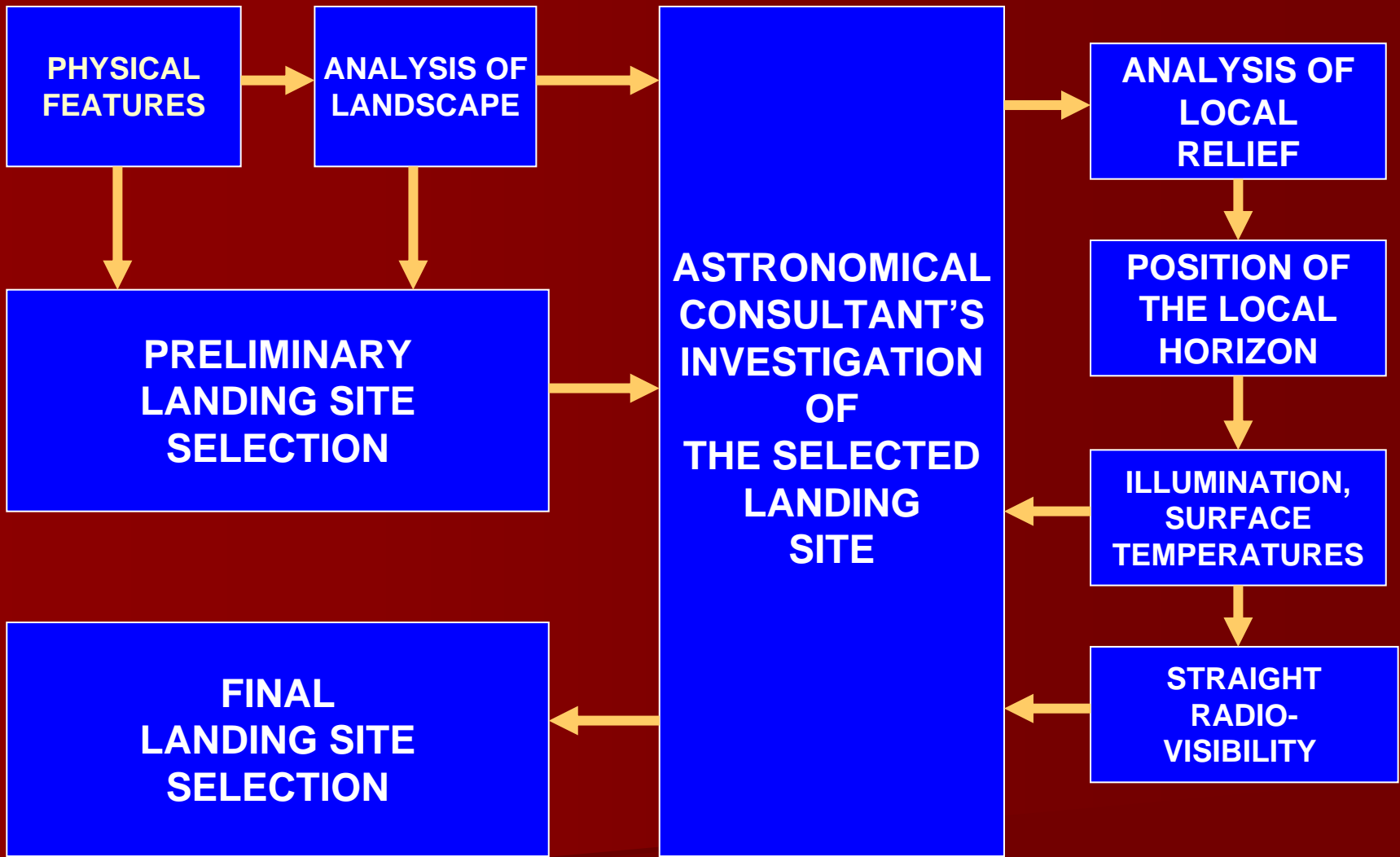


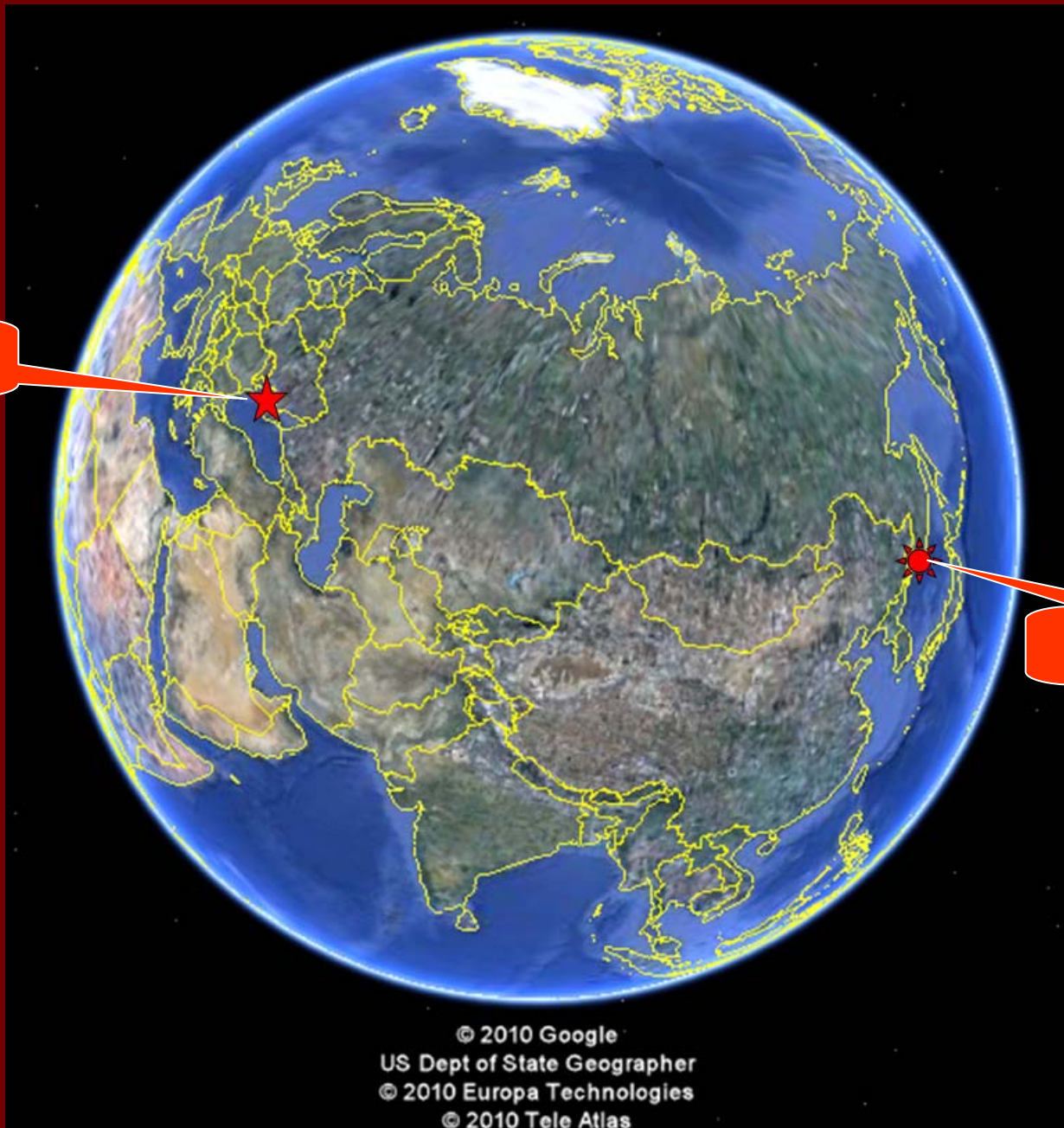
ILLUMINATION CONDITIONS AND RADIOVISIBILITY ANALYSIS FOR LANDING SITE SELECTION

***V.V. SHEVCHENKO
Sternberg State Astronomical Institute
Moscow University***

***LANDING SITE SELECTION FOR LUNA-GLOB MISSION
INTERNATIONAL WORKSHOP # 1
January 25 – 27, 2011, IKI***



EVPATORIYA

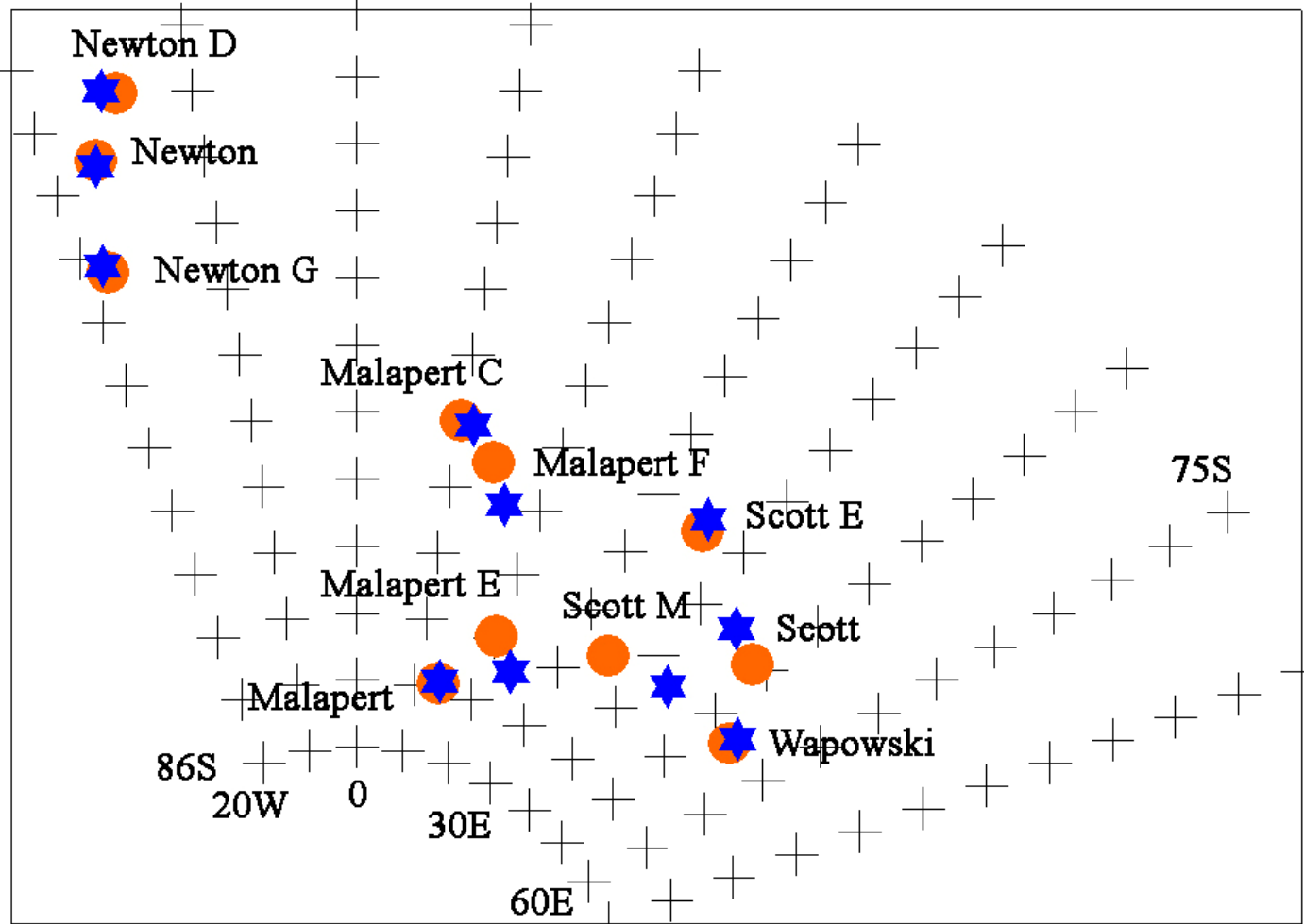


USSURIYSK

© 2010 Google
US Dept of State Geographer
© 2010 Europa Technologies
© 2010 Tele Atlas

COORDINATES SYSTEMS

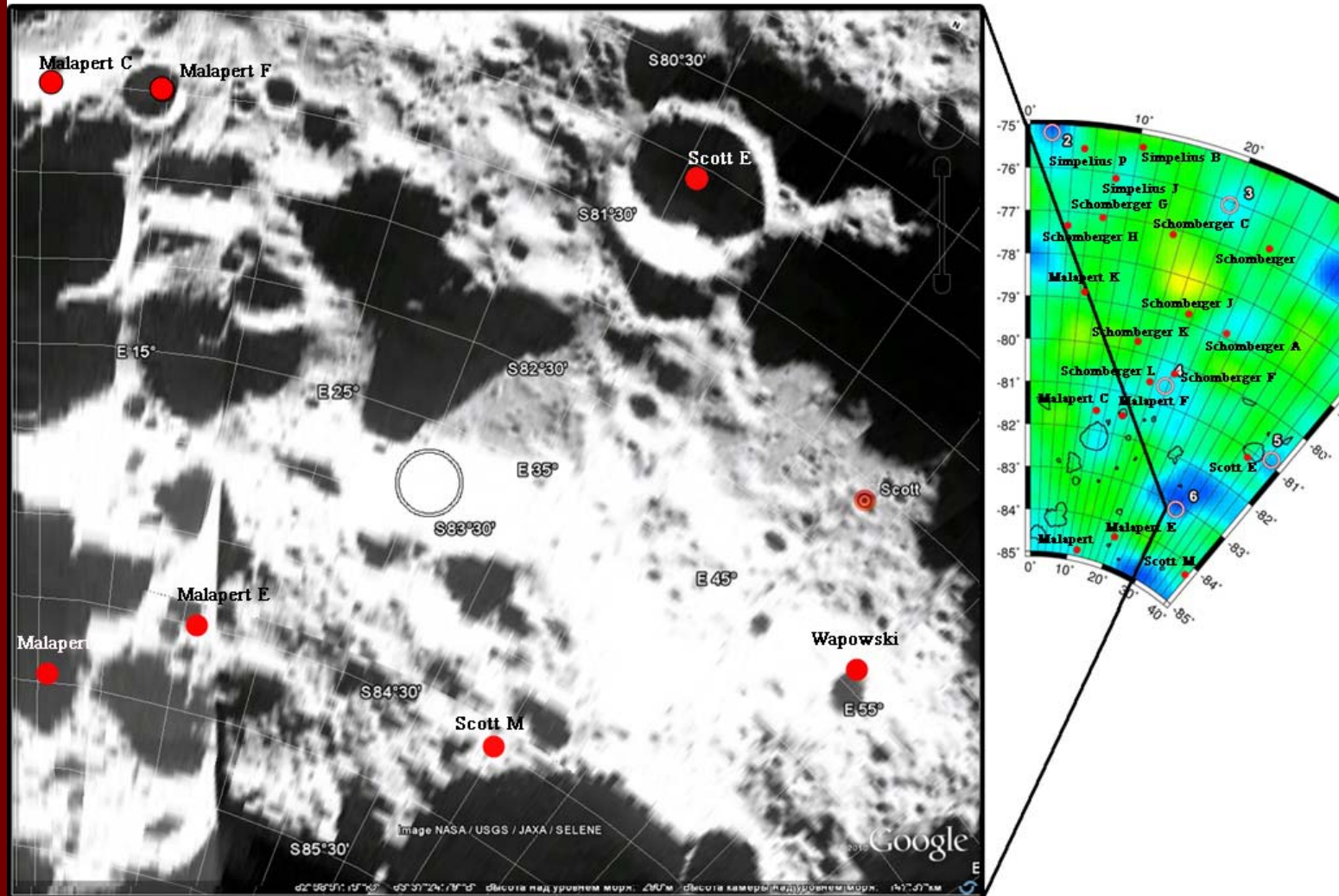
Схема расположения кратеров на снимках JAXA и карте LRO



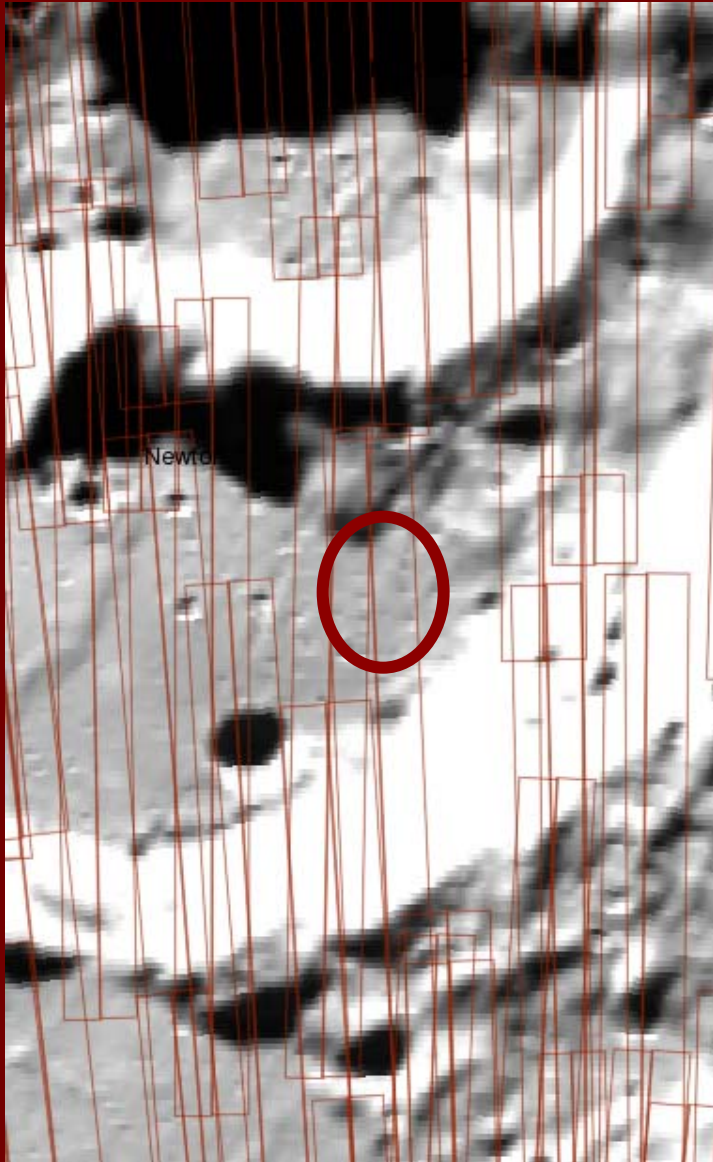
- кратеры на снимках JAXA
- ★ кратеры на карте LRO

COORDINATES SYSTEMS

Sixth east preposition spot

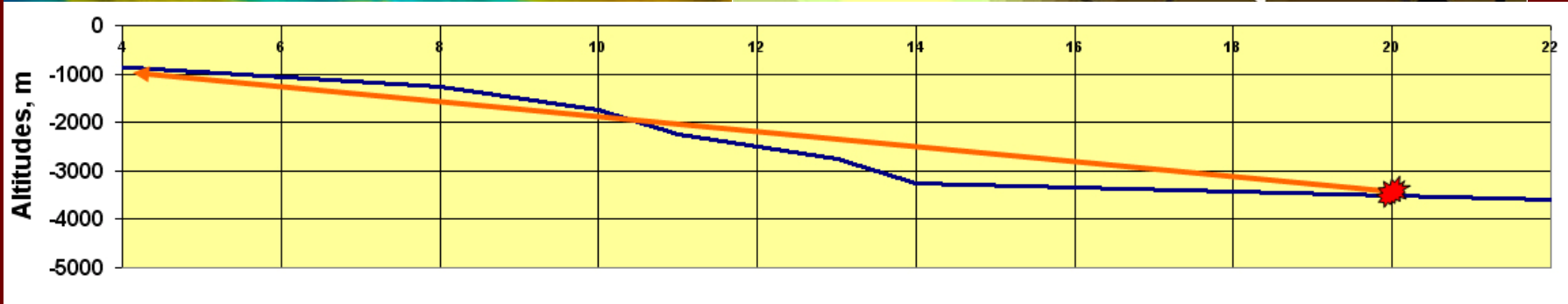
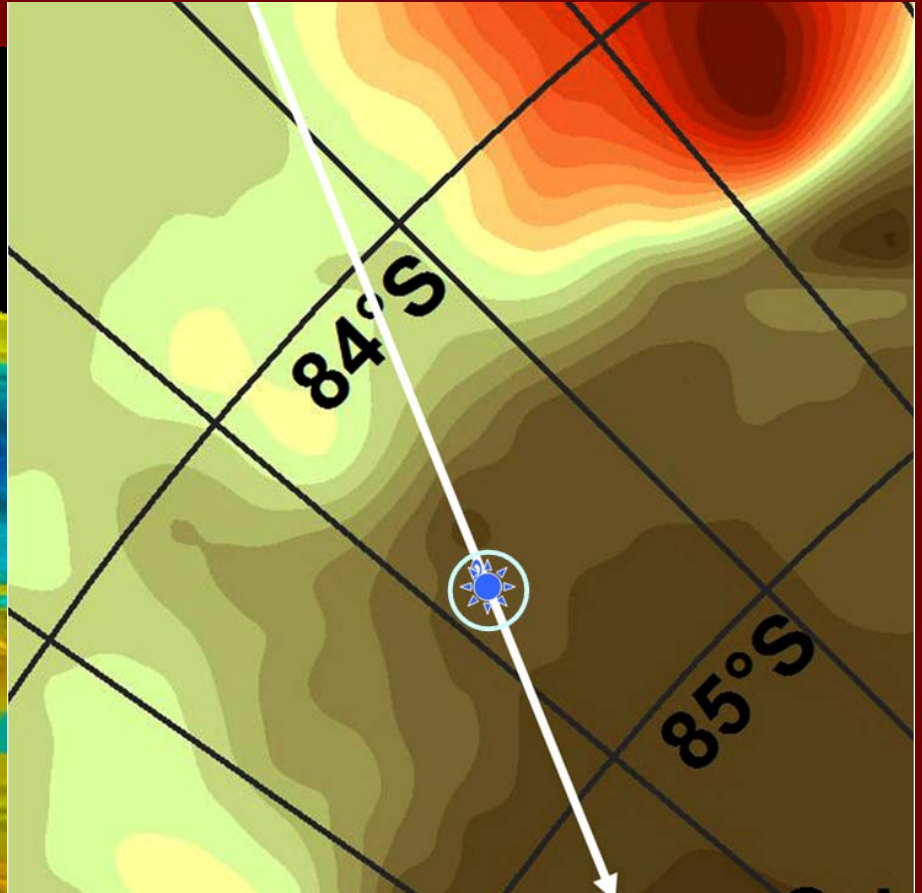
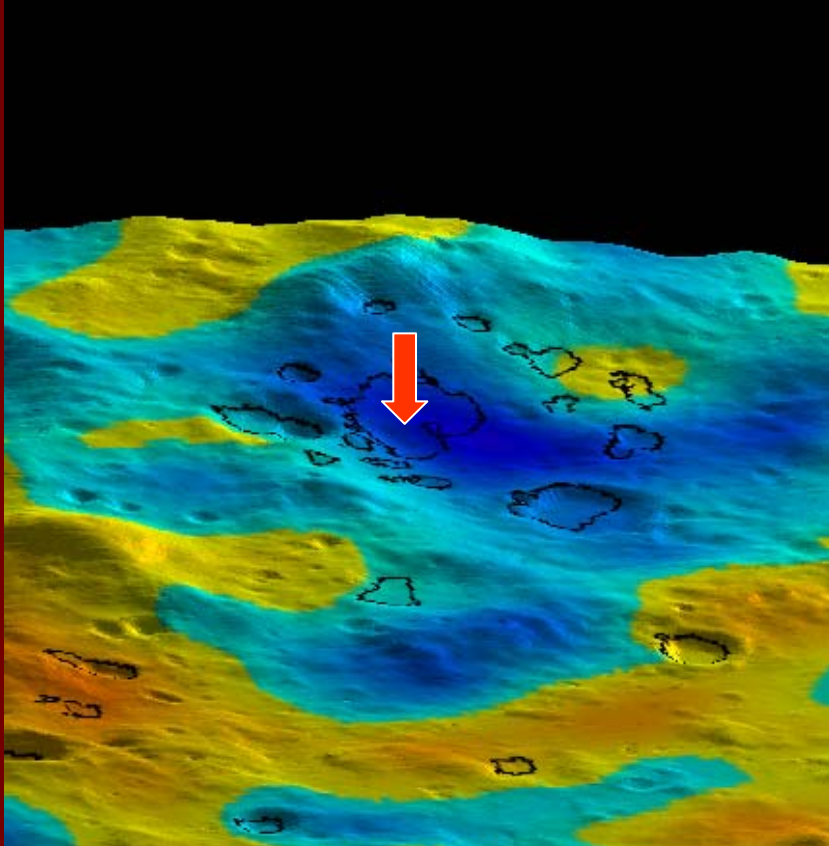


COORDINATES SYSTEMS

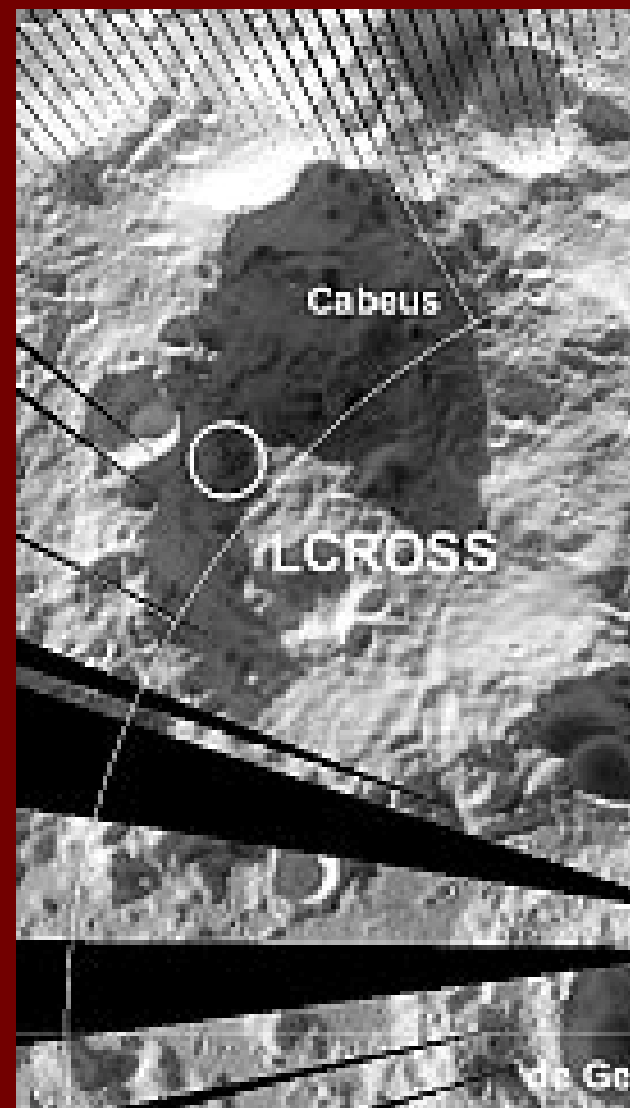
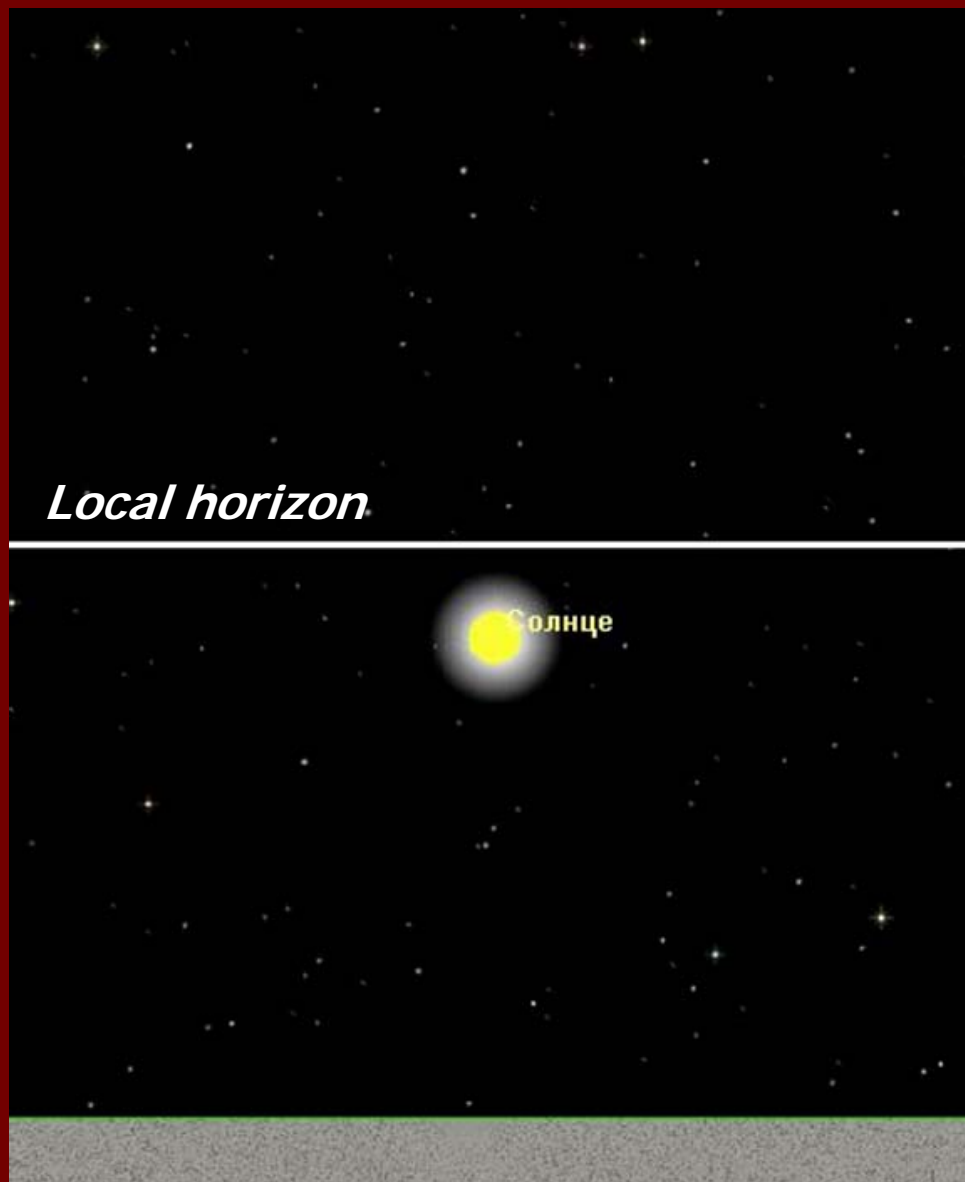


LROC IMAGES OF CRATER NEWTON

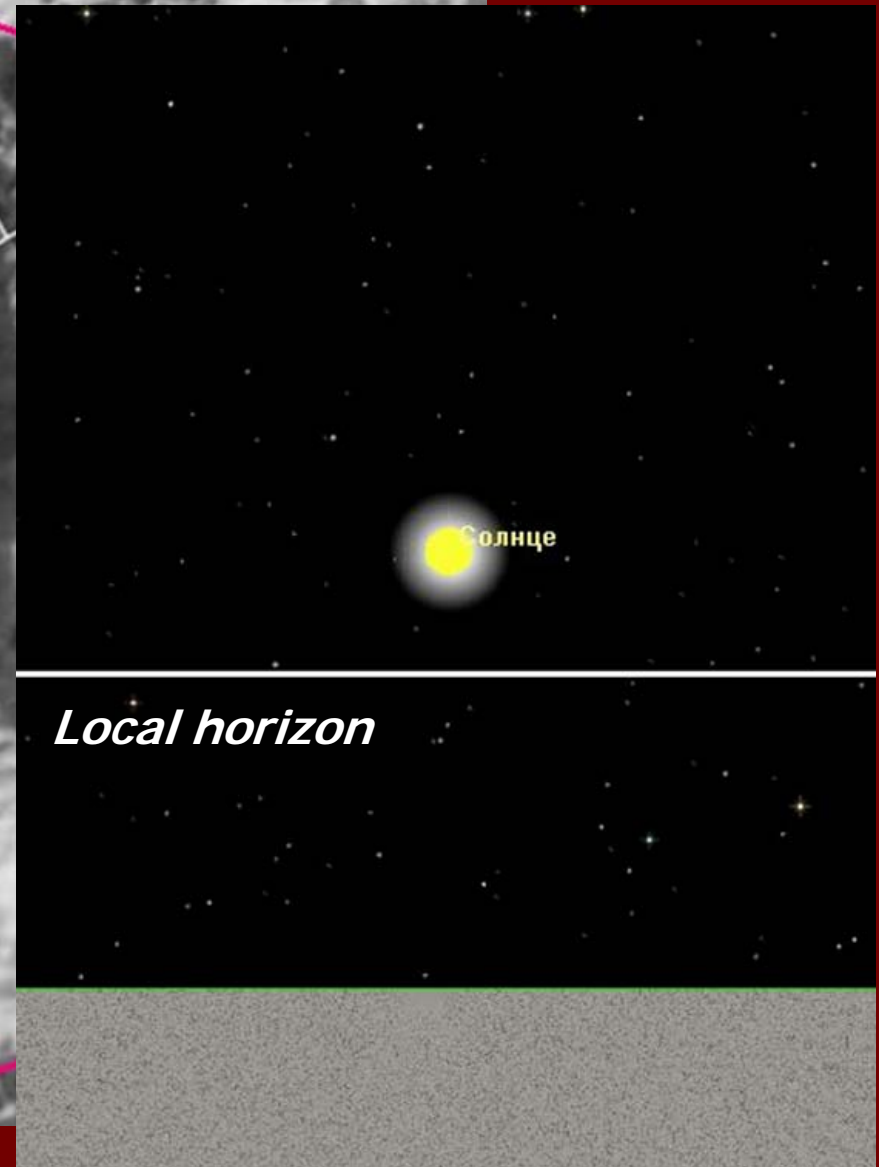
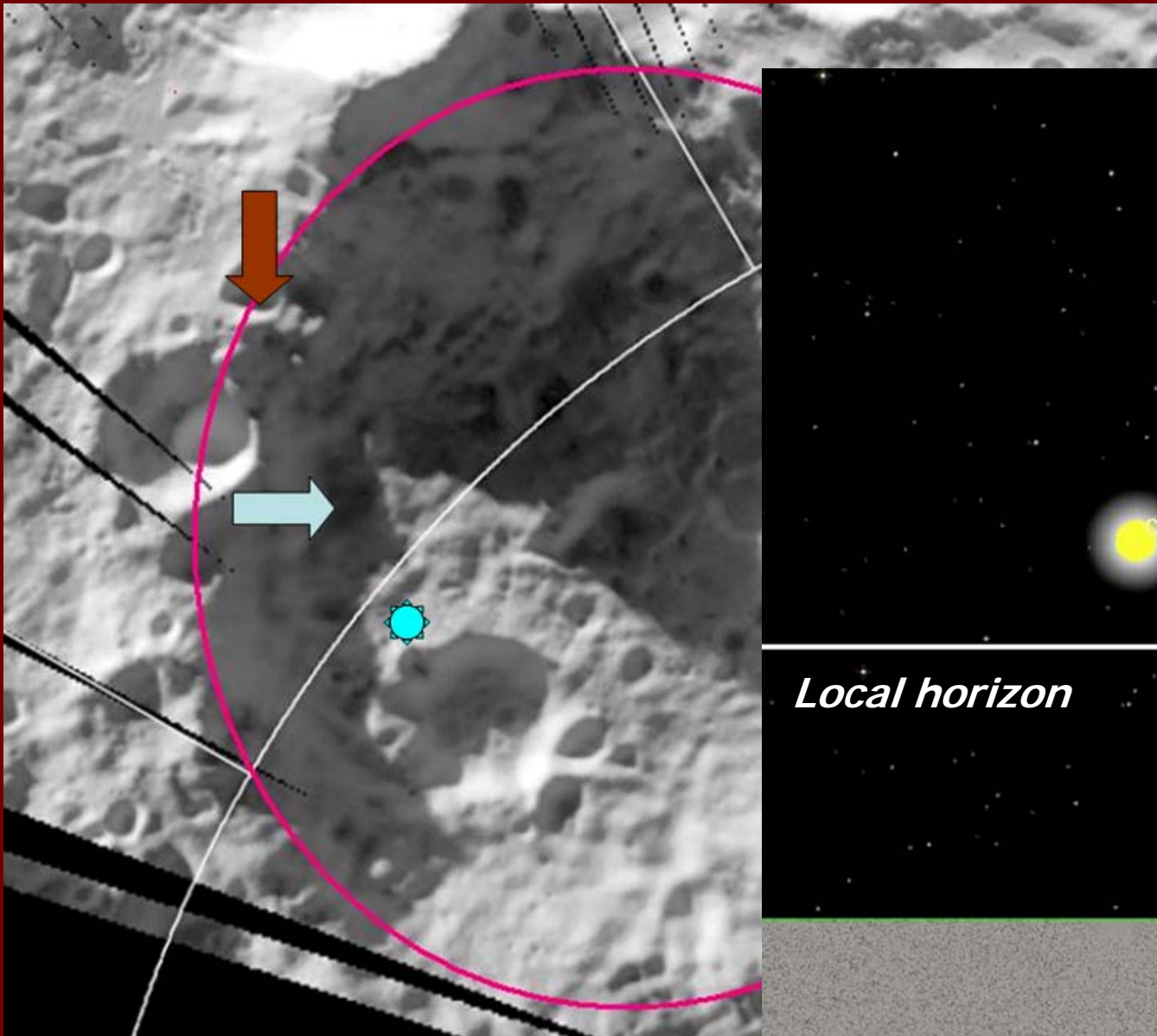
CABEUS – LCROSS MISSION



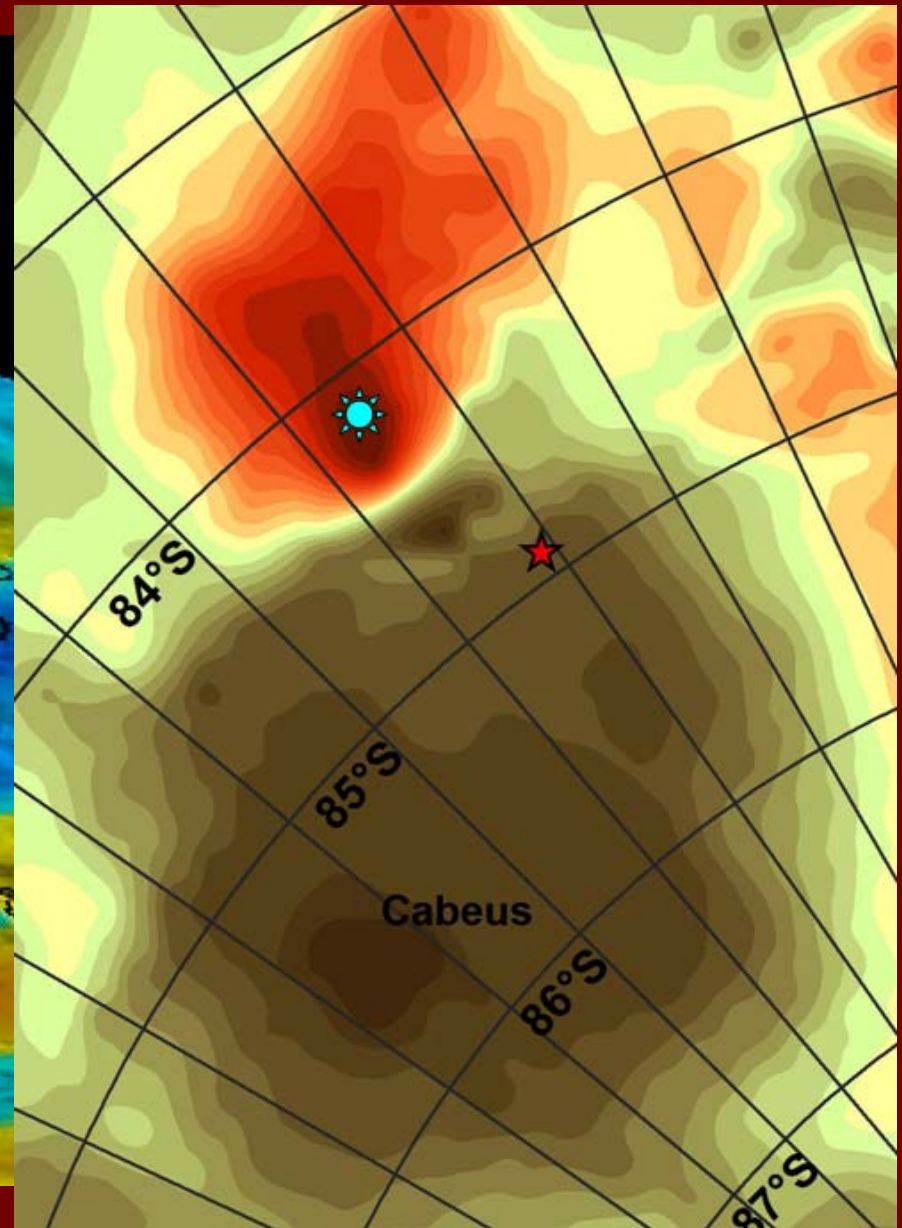
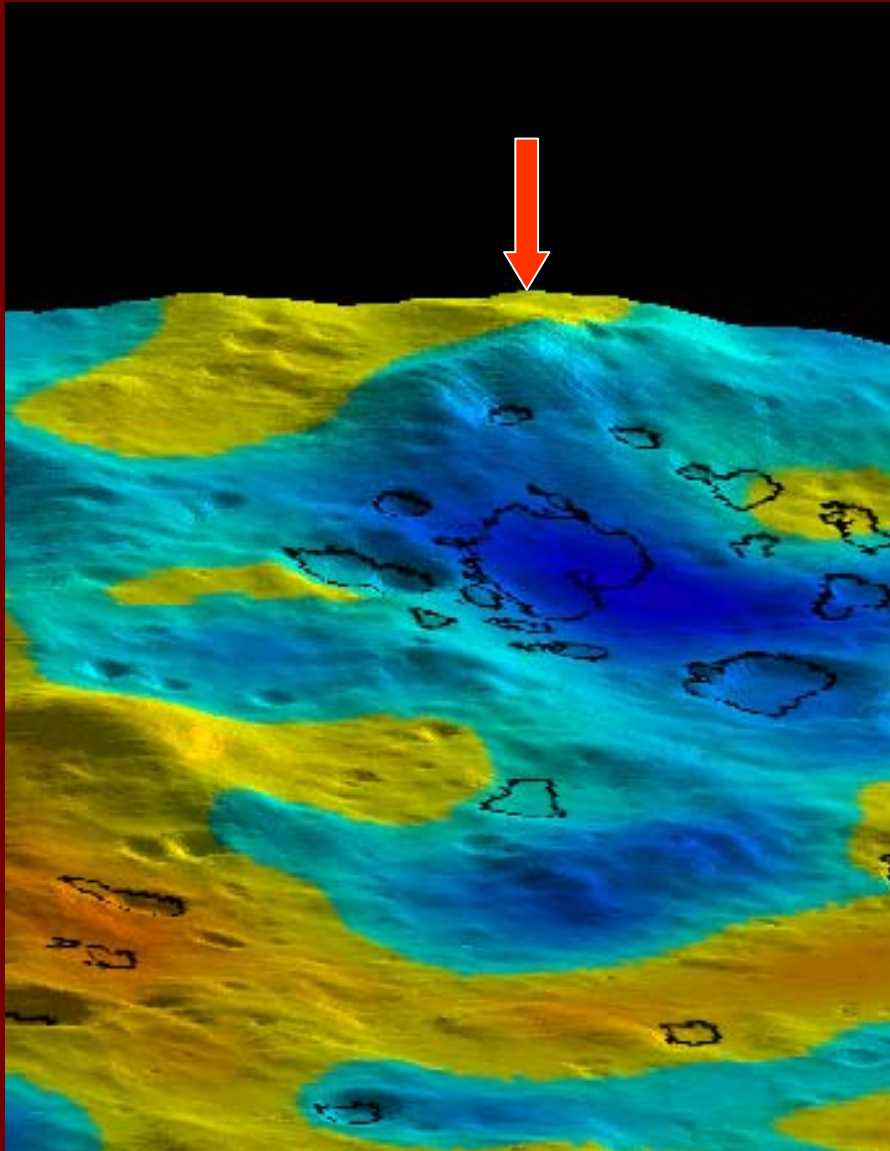
CABEUS – LCROSS MISSION



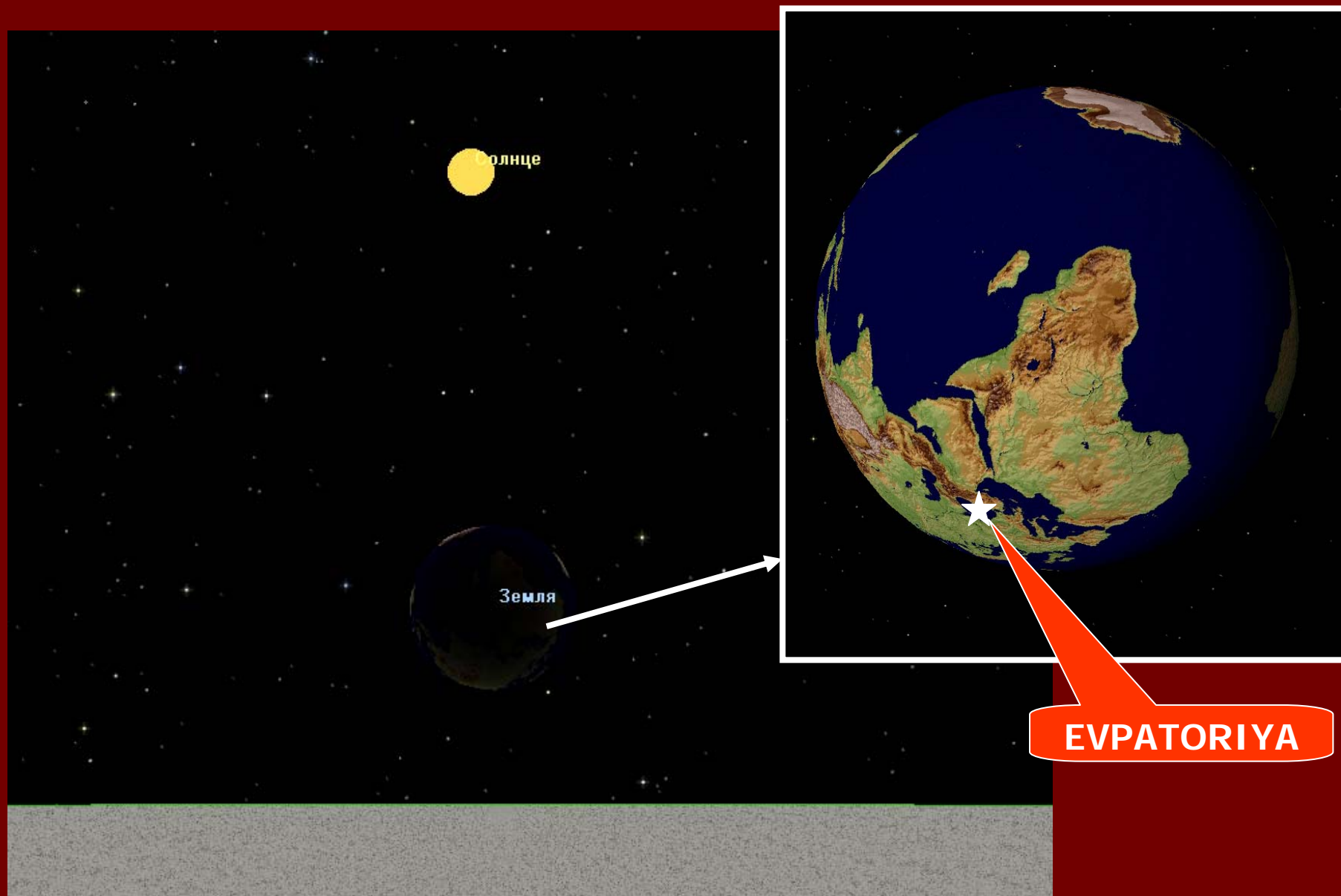
CABEUS – LCROSS MISSION



"CABEUS HILL"

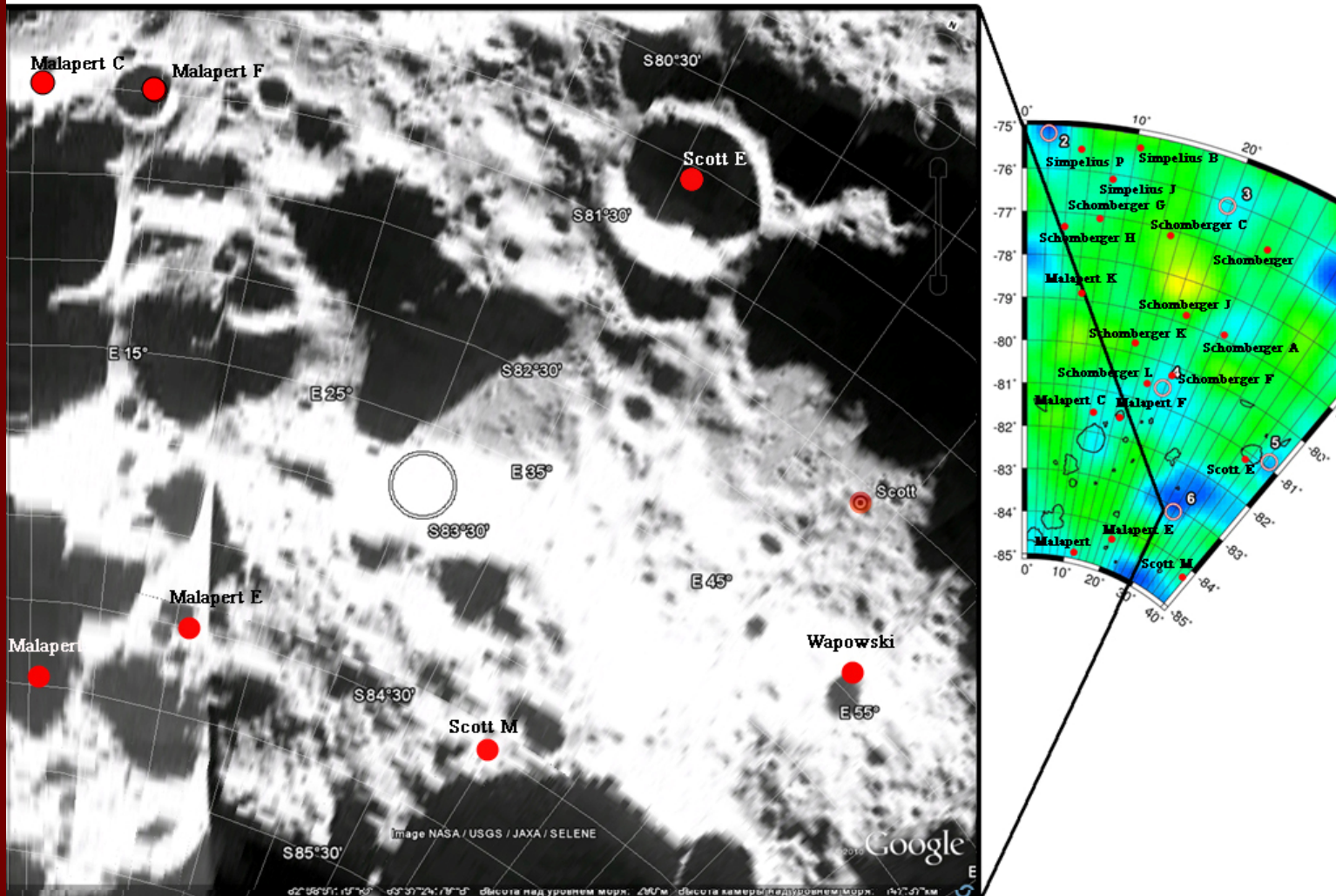


"CABEUS HILL"



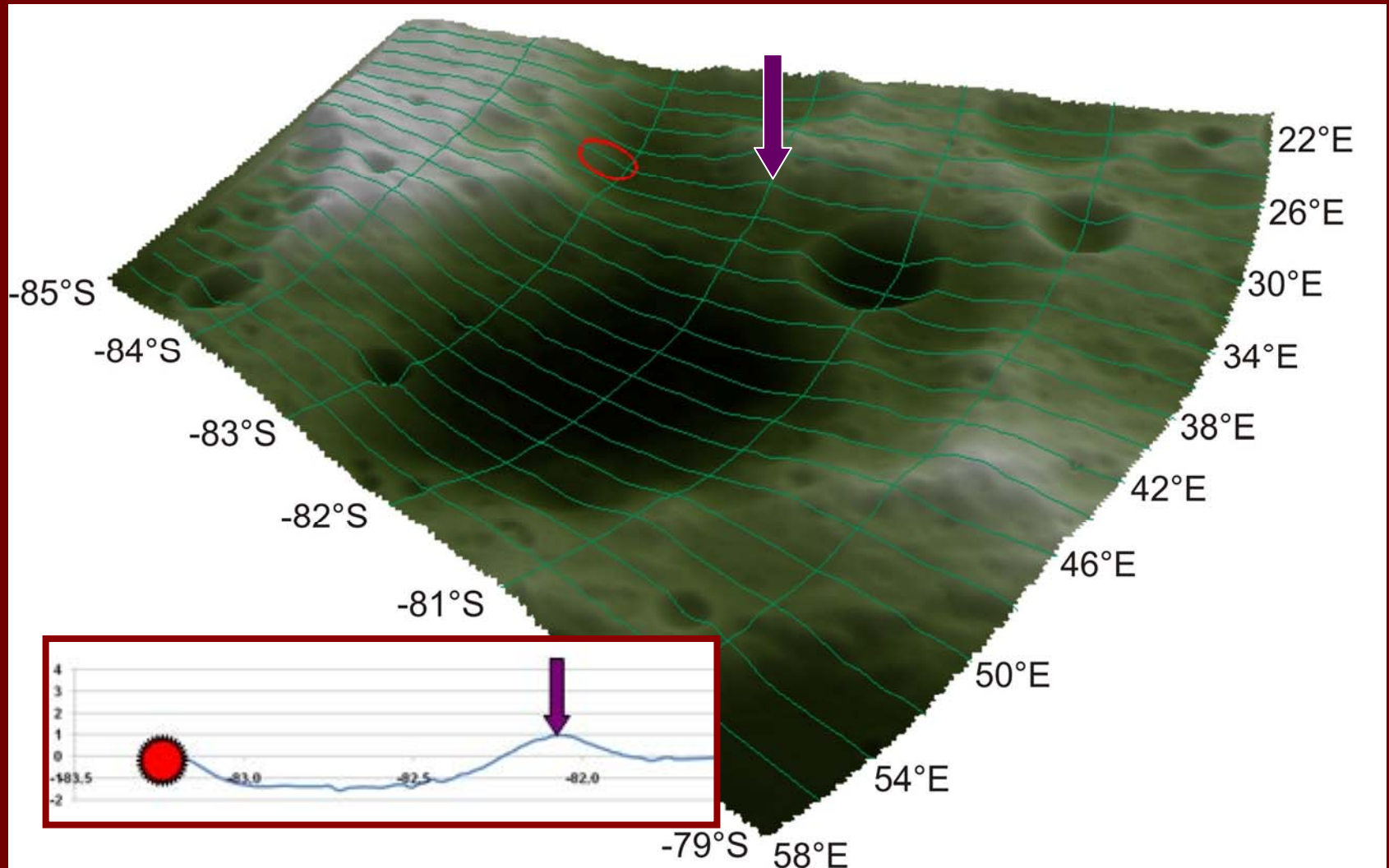
ASTRONOMICAL CONSULTANT'S INVESTIGATION

Sixth east preposition spot

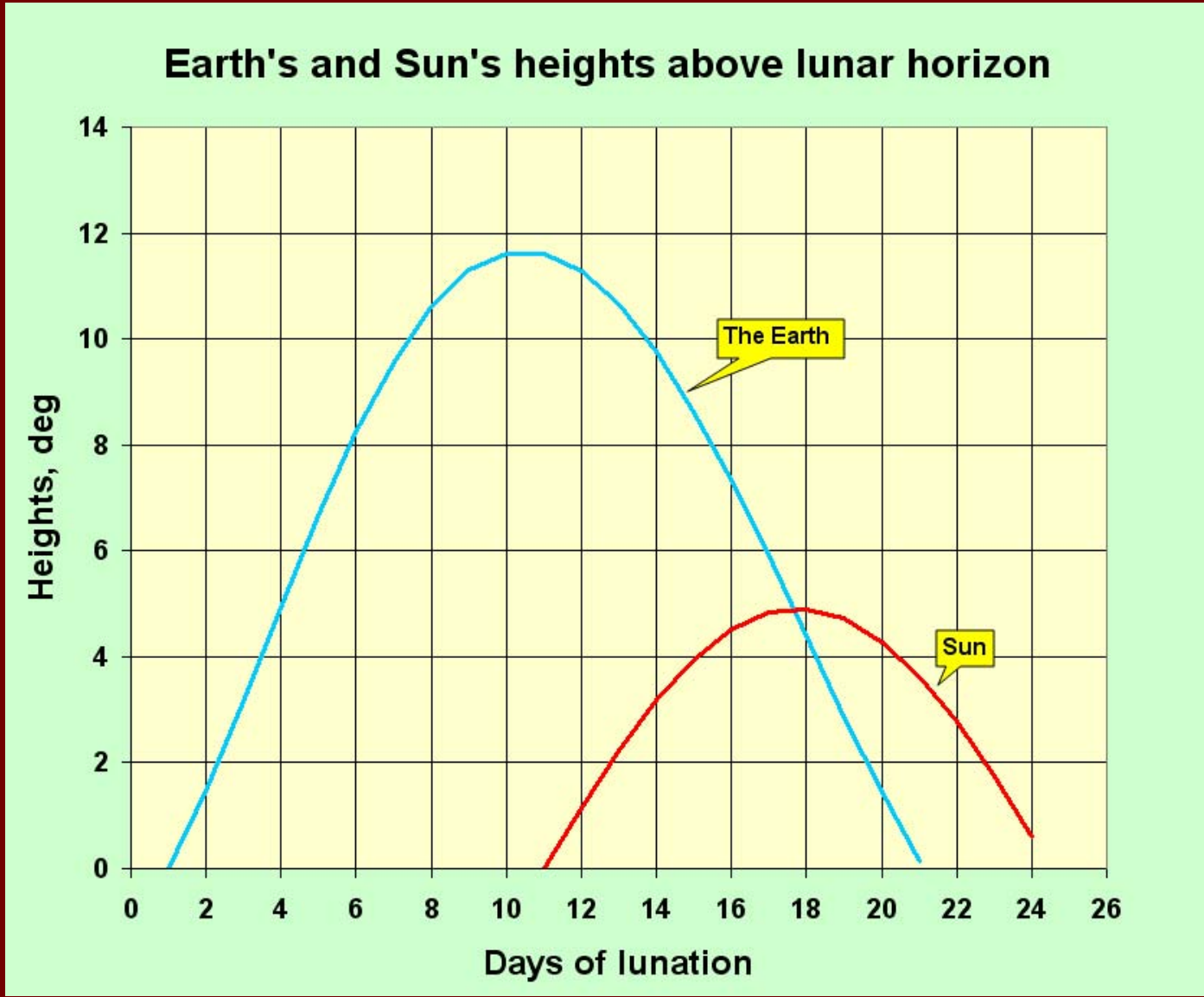


CRATER SCOTT

ASTRONOMICAL CONSULTANT'S INVESTIGATION

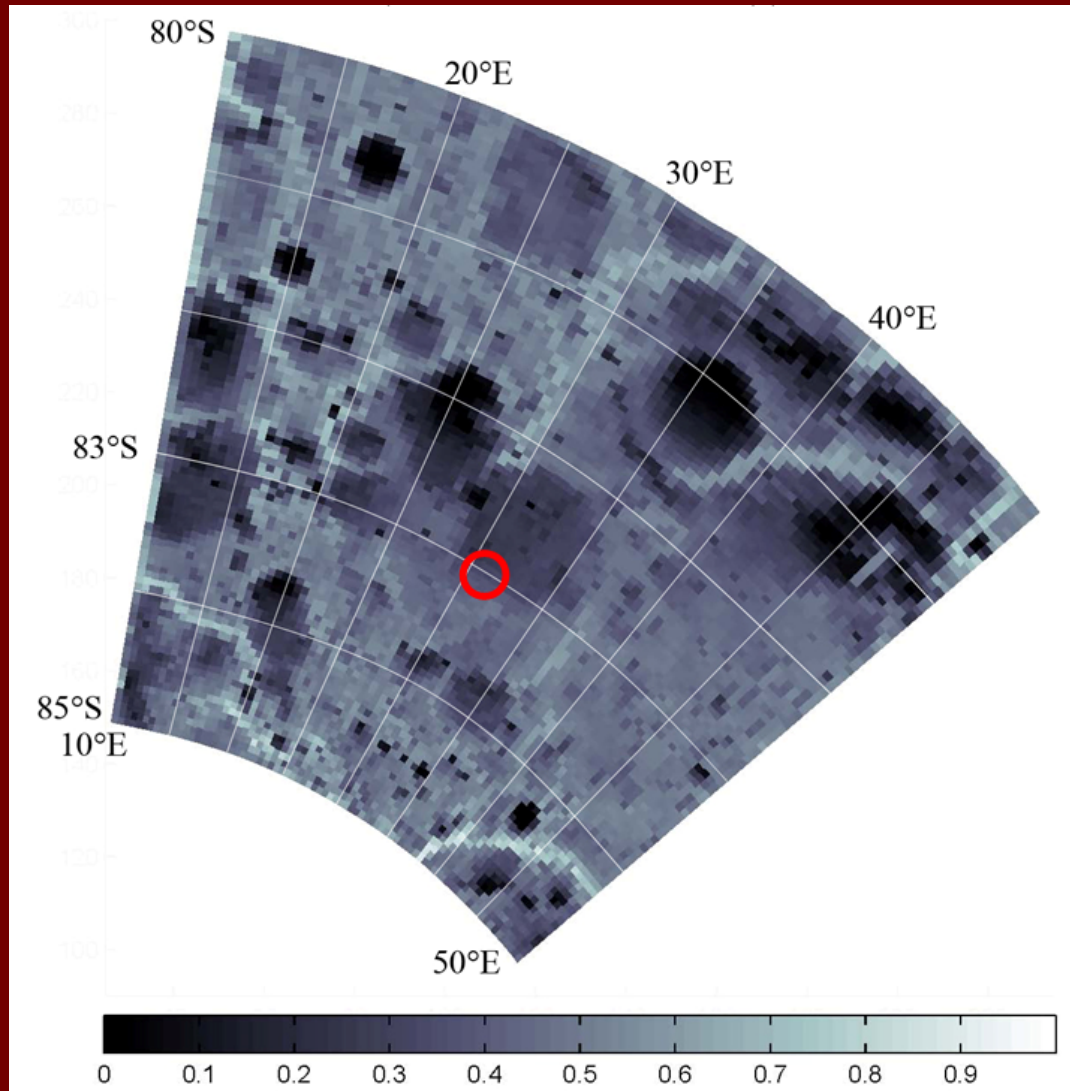


ASTRONOMICAL CONSULTANT'S INVESTIGATION



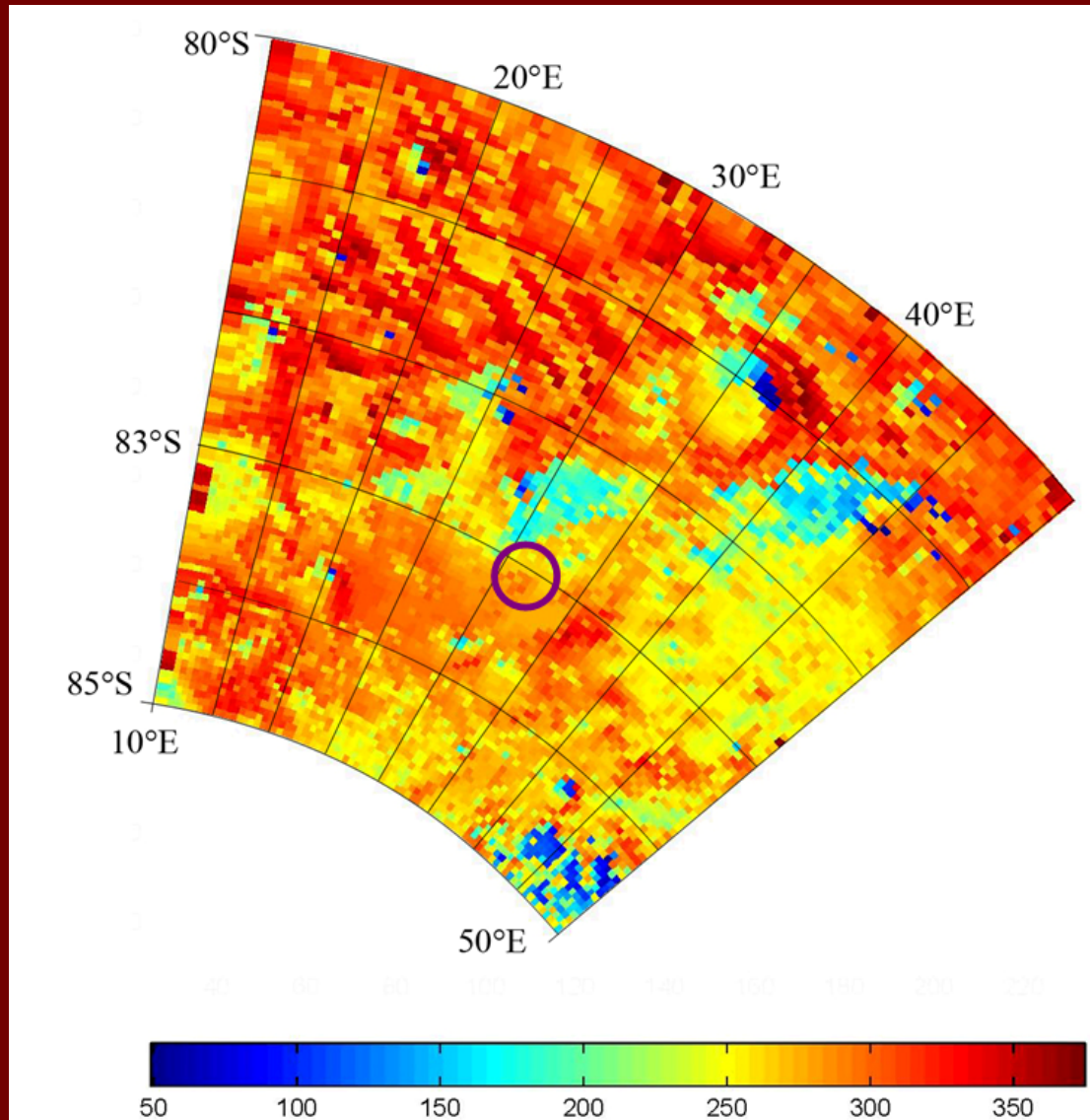
FROM 20.12.2011 TO 12.01.2012

ASTRONOMICAL CONSULTANT'S INVESTIGATION



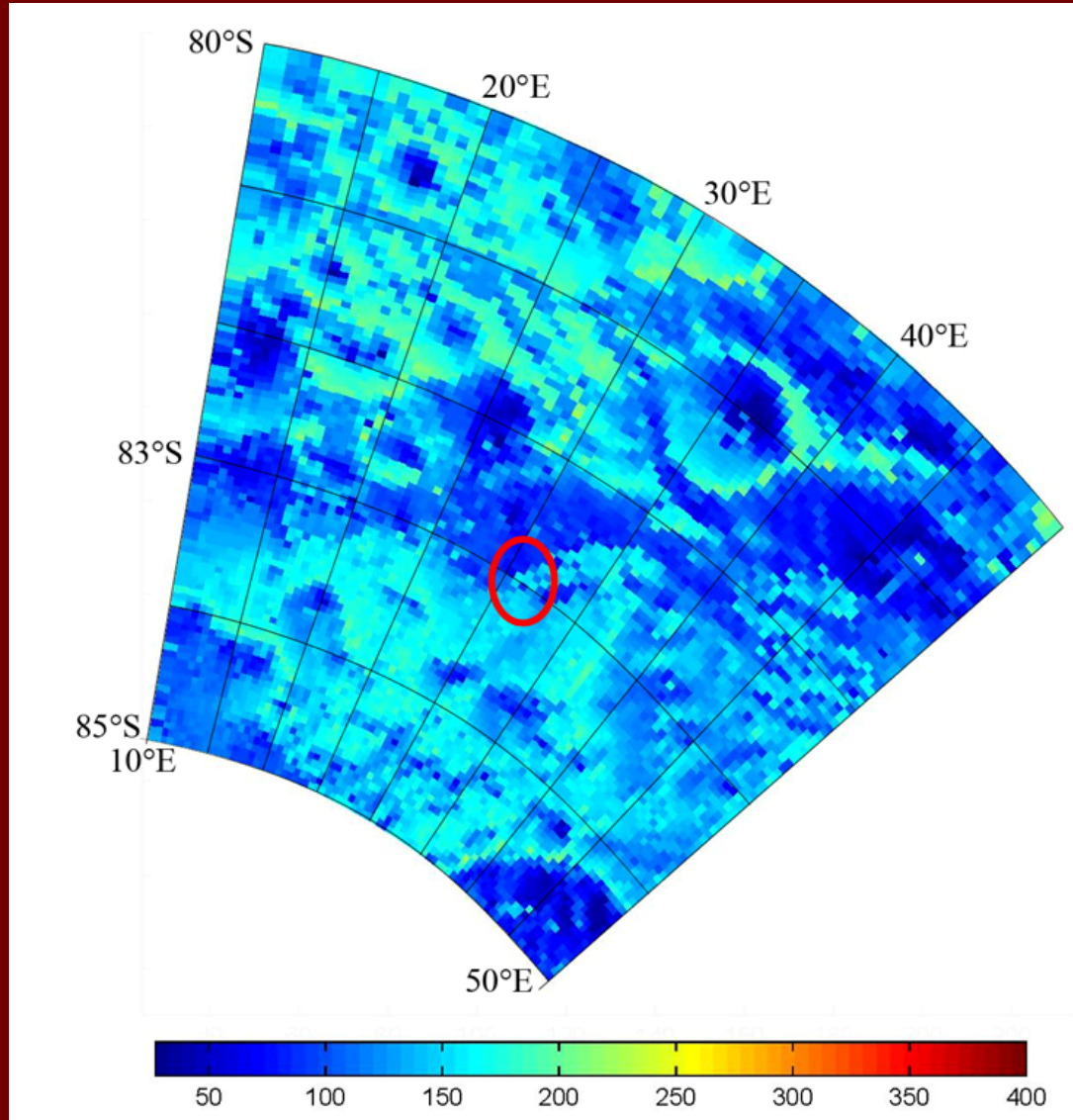
ILLUMINATION TIME, % FROM LUNATION CYCLE TIME

ASTRONOMICAL CONSULTANT'S INVESTIGATION



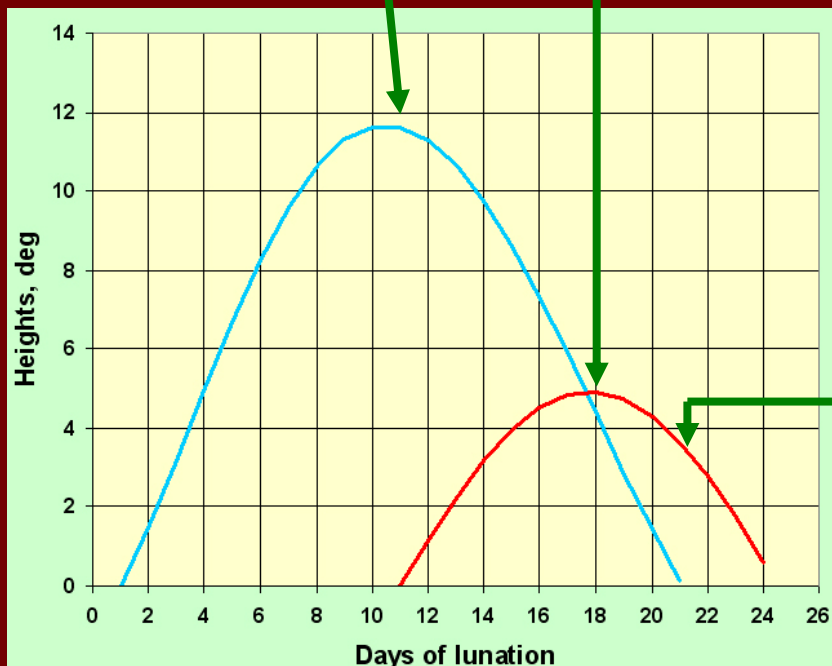
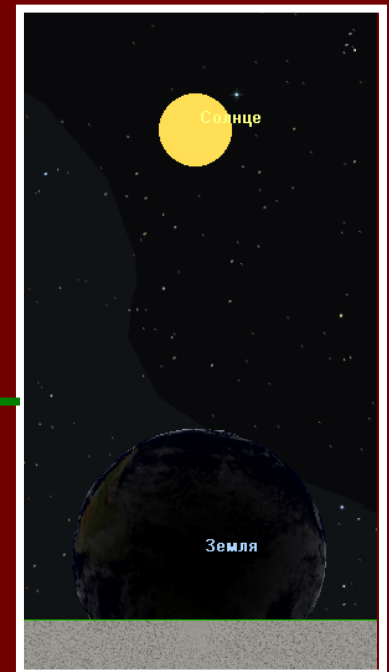
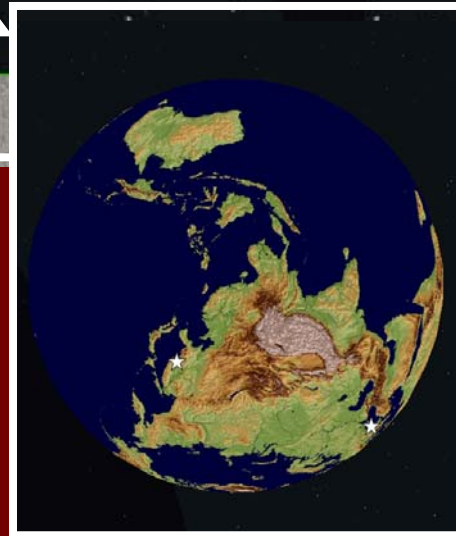
MAXIMUM TEMPERATURE OF SURFACE PER LUNATION, K

ASTRONOMICAL CONSULTANT'S INVESTIGATION



AVERAGE TEMPERATURE OF SURFACE PER LUNATION, K

ASTRONOMICAL CONSULTANT'S INVESTIGATION



**VISIBILITY OF SUN
AND EARTH FROM
30.12.2011 TO
09.01.2012**

PARTICIPANTS OF THE WORK:

KOZLOVA E.A.

RODIONOVA J.F.

LAZAREV E.N.

SKOBELEVA T.P.

PUGACHEVA S.G.

SHANGARAEV A.A.